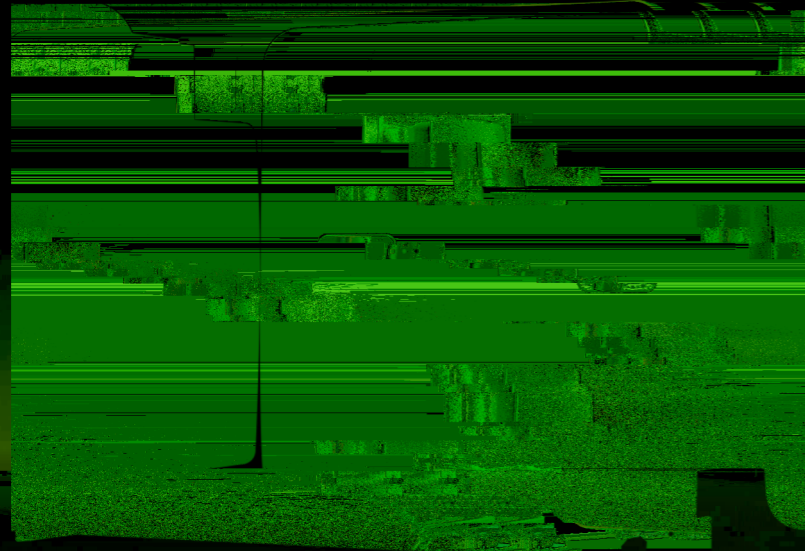


# TS320KTL-HV 1500V组串式逆变器



- 
- 

• SVG

- 



- 99%
- 98.53%
- MPPT
- 182/210
- 1.8



- IP66
- C5

- 



- IV
- PID
- 

## 技术参数

TS320KTL-HV	
	99%
	98.53%
	1500V
MPPT	48A
MPPT	60A
MPPT	500V-1500V
	24 28 32
MPPT	12
	320kW@40
	360kVA
cosφ=1	360kW
	800V 3W+PE
	50Hz
	231A
	260A
	0.8 -0.8
	<3%In
	Type
	Type
	LED WIFI+APP
RS485 PLC	
WIFI	
x x	1120mm*820mm*365mm
	120kg
	-25 -60
	5000m
	0%-100%
	MC4.EVO2
	OT/DT
	IP66
	GB/T 37408, NB/T 32004